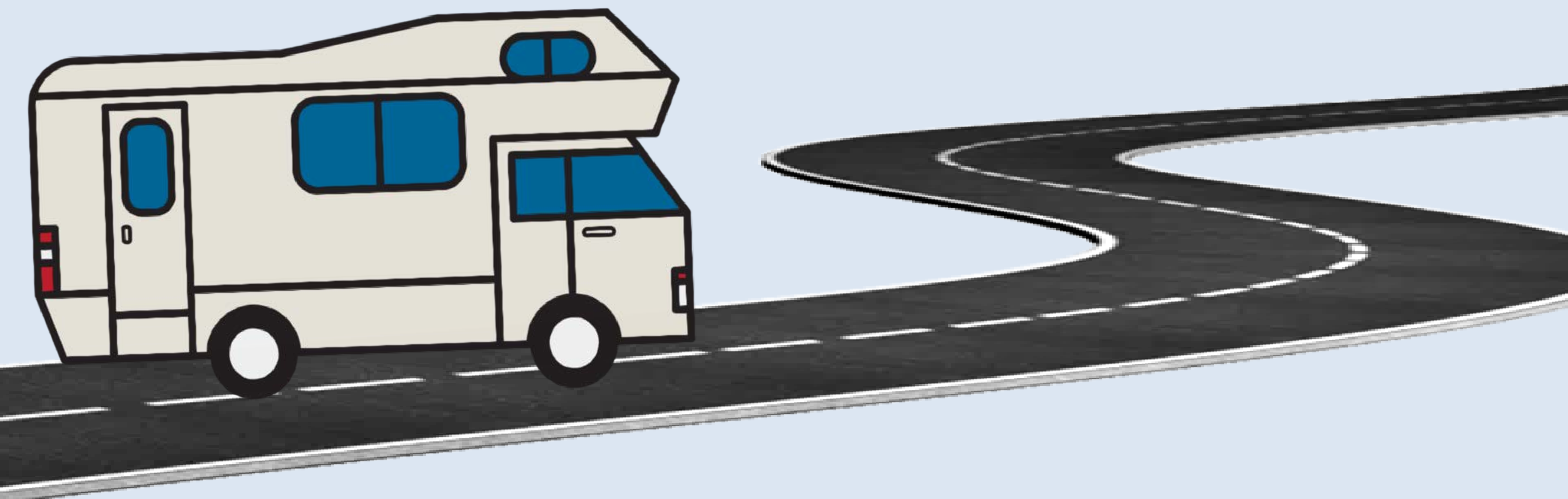


Neha Edala, Rutgers Ernest Mario School of Pharmacy  
Santiago Varela, Rutgers School of Public Health  
Helen Yang, Rutgers Robert Wood Johnson Medical School  
Site Preceptor: Norma Bowe, Ph.D., RN, Global Grace Health Be The Change NJ

## Mission Overview:

Global Grace Health (GGH) is a non-profit organization that provides mobile health outreach and public health services to underserved communities across New Jersey. Services provided include blood pressure and sugar checks, basic medical consultations, health education, and supply distribution.



Blood pressure screenings and supplies (water, over-the-counter medications, & hygiene kits) for the Haitian migrant farm workers.


Part of the GGH team, pictured with the RV the mobile clinic operates out of, at one of the migrant farm locations. Here, we provided water, hygiene kits, and toys for the kids.



Weekly clinic in a Trenton church, providing blood pressure & blood sugar checks, and basic medical consultation/education.




Water distribution and blood pressure/sugar checks for unhoused individuals in New Brunswick.



New Brunswick


Free/Low-Cost Health Resources



Eric B. Chandler Health Center

A federally qualified health center providing primary/preventative medical and dental care to patients with private insurance, Medicaid, Medicare, or on a sliding scale depending on ability to pay for uninsured patients.

Phone: 732-235-6700  
Address: 277 George Street, New Brunswick, NJ 08901




HIP-HOP Promise Clinic

A medical student-run free primary care clinic serving clients of Elijah's Promise Soup Kitchen. Services provided include basic health maintenance, screenings, medications, basic laboratory work, and psychiatric services.

Elijah's Promise Soup Kitchen is located at 18 Neilson Street, New Brunswick NJ. The soup kitchen is open Monday-Saturday 11am-12:30pm, and individuals can receive one hot meal and one bagged meal per guest. Clients can be referred to Promise Clinic through Elijah Promise staff, or at community blood pressure screenings on Saturdays in the spring through fall.


If you are experiencing a medical emergency, please call 9-1-1 or go to the emergency room.

Robert Wood Johnson University Hospital: 1 Robert Wood Johnson Hospital, New Brunswick, NJ 08901  
St. Peter's University Hospital: 254 Easton Ave, New Brunswick, NJ 08901



Trenton

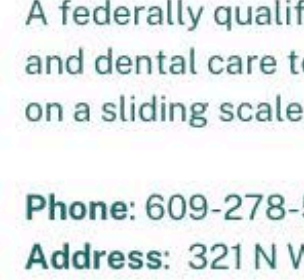
Free/Low-Cost Health Resources



Medina Health Center

A qualified health center that provides primary care services **free of charge**. Open from Mondays to Fridays from 10:30am-7pm. Patients do not need to have insurance, ID, or an appointment to be seen.


Phone: 609-323-5159  
Address: 828 N Holden Avenue, Trenton, NJ 08638



Henry J Austin Health Center

A federally qualified health center providing primary/preventative medical and dental care to patients with private insurance, Medicaid/Medicare or on a sliding scale depending on ability to pay for uninsured patients.

Phone: 609-278-5900  
Address: 321 N Warren Street, Trenton, NJ 08618



Catholic Charities Diocese of Trenton

A certified community behavioral health clinic offers services for addiction recovery, mental health help, immigration services, housing & food, domestic violence, and children & family. Offers case management, peer, and family support services. **No insurance required.**

Phone: 800-360-7711  
Address: 39 N Clinton Avenue, Trenton, NJ 08609

If you are experiencing a medical emergency, please call 9-1-1 or go to the emergency room.

Capital Health Regional Medical Center: 750 Brunswick Ave, Trenton, NJ 08638

WHAT IS CHARITY CARE?

Charity Care is free or reduced charge care provided to patients who receive inpatient and outpatient services at acute care hospitals for necessary hospital care.

ELIGIBILITY

For patients who:

- Have no health coverage or coverage that pays only part of the bill AND
- Are ineligible for any private or government coverage (such as Medicaid) AND
- Meet both the income and assets eligibility criteria

Income as a Percentage of HUD Poverty Income Guidelines	Percentage of Charge Paid by Patient
less than or equal to 200%	0%
greater than 200% but less than or equal to 225%	20%
greater than 225% but less than or equal to 250%	40%
greater than 250% but less than or equal to 275%	60%
greater than 275% but less than or equal to 300%	80%
greater than 300%	100%

Assets Criteria: Individuals cannot exceed \$7,500 and family assets cannot exceed \$15,000

WHAT TO DO:

Tell the hospital providers you need Charity Care while you are receiving treatment. They will refer you to a hospital financial counselor who can help.

## Our Project Goals:

- Provide resources to connect patients to longitudinal medical care in Trenton, New Brunswick, and Asbury Park
- Promote health literacy with materials in English, Spanish, and Haitian Creole
- Encourage patients to seek more autonomy and understanding of their own healthcare by providing educational materials

## Acknowledgements:

*The EASI program appreciates the support from the Office of the Rutgers Health Chancellor, the participating schools, the Boggs Center on Developmental Disabilities at RWJMS, and the community sites that made this possible.*